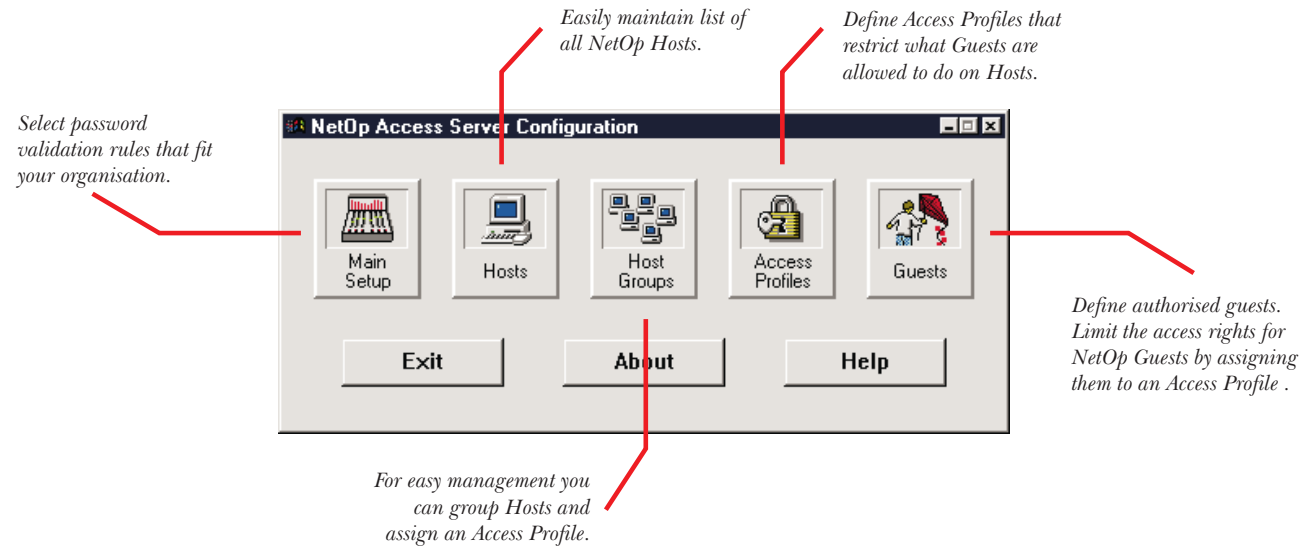


NetOp[®] Access Server

Remote control security management



Technology that helps

NetOp Access Server - centralised security

Standard remote control security involves defining security settings on each individual PC in your organisation. It can be quite a task to decentrally implement and manage your security policy. The solution is the centralised approach offered by the NetOp Access Server. This NetOp module manages security information about Guests and Hosts. The purpose is to permit central control of security settings and to perform authentication tasks centrally. With the NetOp Access Server, you get a higher level of security while minimising the effort needed to implement and control your security policy.

Advanced local and remote authentication

Hosts can require authentication on a NetOp Access Server before remote control is permitted. Remote control is only possible if an Access Server is available. An Access Server can be located on the Guest network or the Host network. This allows for central authentication of stand-alone Guests dialing in to Hosts via the NetOp Gateway. It also permits authentication of Guests, e.g. at headquarter, before remote control of a PC in a branch office is possible.

One central database with security settings

An encrypted database holds the security information, which the NetOp administrators maintain via a special configuration program. For easier administration, Hosts can be grouped and attached to an Access Profile that provides certain rights. Each Guest belongs to an Access Profile that contains one or more Host groups. Define password rules such as minimum length, lifetime, number of wrong entries allowed, etc. If a rule is violated, the Guest ID can be locked automatically, preventing further remote control until an administrator unlocks the Guest ID. By password protecting the database and physically securing it, your organisation is well protected from unauthorised access.

A full-featured Host with Log Server

The NetOp Access Server program also contains a complete Host, allowing the PC to be remote controlled, when the Access Server runs. Furthermore the Access Server includes NetOp Log Server features, allowing you to centrally log remote control activity like who controlled who and when (please see the NetOp Log Server datasheet for details).

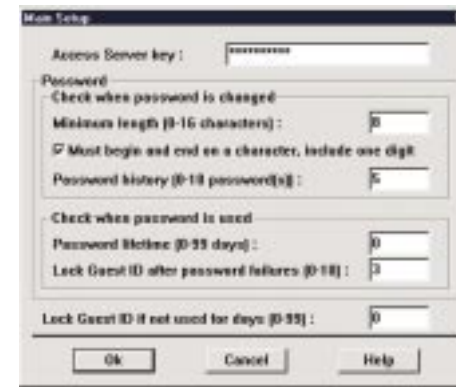
Developed by:
Danware Data A/S
Herlev Hovedgade 195, DK-2730 Herlev, Denmark
Tel: +45 44 53 25 25 · Fax: +45 44 53 15 51
E-mail: danware@danware.dk
Home page: http://www.danware.com



NetOp and the red kite are registered trademarks of Danware. Other brand and product names are trademarks of their respective holders.

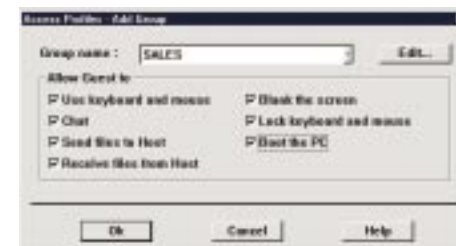
© 1998 Copyright Danware Data A/S. All rights reserved.

PASSWORD POLICY



Central definition of your password policies. Violators are automatically restricted from remote controlling Hosts.

ACCESS PROFILES



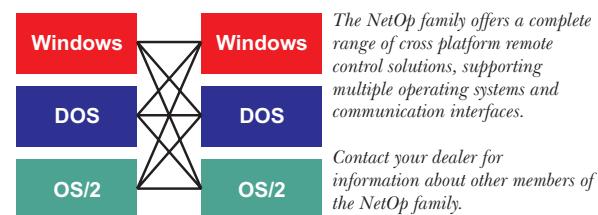
Decide what kind of actions can be performed on a group of Hosts. If nothing is checked, it is a view-only profile.

ADMINISTRATOR



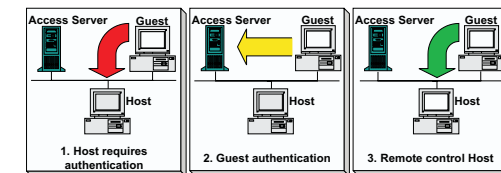
Only administrators have access to the configuration program. Easily add and delete Hosts, Guests and security definitions.

THE NETOP FAMILY

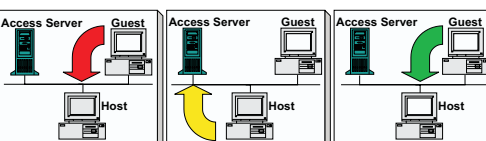
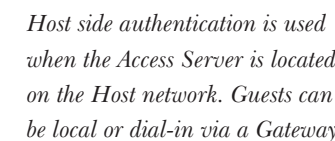


TECHNICAL SPECIFICATIONS

Program	NetOp Access Server
Program type	Remote control security management
Requirements Windows ver.	PC: IBM PC/PS with an 80386 processor or higher or 100% compatible • Video: Any graphics adapter supported by Windows • Disk space: 1 MB • Windows: Windows or Windows for Workgroups 3.1x, Windows 95, Windows NT 3.1 or later, Windows NT 4.0, (Intel platform) or compatible, must be running enhanced mode and support VxDs • IPX: Netware Windows Client or compatible • NetBIOS: IBM or compatible • TCP/IP: WinSock 1.1 compliant.
Requirements OS/2 ver.	Computer: IBM PS/PC or compatible • Video: Any graphics adapter supported by OS/2 • Disk space 1 MB • OS/2: Version 2.0 or higher (incl. Warp) • IPX: Novell's Netware requester for OS/2 or compatible • NetBIOS: IBM or compatible • TCP/IP: IBM's TCP/2 and FTP's PC/TCP for OS/2 or compatible.
Communication	Authentication via IPX, NetBIOS or TCP/IP. Remote control via protocols supported by Guest and Host modules.
Authentication	Hosts can automatically require Access Server authentication of Guests before a remote control session starts. Depending on the Host configuration either the Host or the Guest can perform the authentication. There can be more than one Access Server in the network, when the Host perform the authentication. The Host can optionally specify the MAC or IP address of the Access Server to use. Guests can remote control Hosts that do not require authentication.
Security	Minimum password length • Password must begin and end with a character include one digit • Maintain password history • Password lifetime • Lock Guest ID after a certain number of password failures • Lock Guest ID if not used for a certain number of days • Administrator password protects configuration on Access Server.
Access Profiles	Allow Guest to: Use keyboard and mouse • Chat • Send files to Host • Receive files from Host • Blank the screen • Lock keyboard and mouse • Boot the PC.
Host groups	Hosts can be placed into Host groups • Host groups can join Access Profiles • Guests can control Hosts in a specific Access Profile.
Log	Reports specified activity from the Access Server to a local file and/or to a NetOp Log Server across the network. The Access Server can serve as a Log Server itself.
Related NetOp products	NetOp Access Server is compatible with NetOp for OS/2 and NetOp for Windows version 5.3 or later. NetOp for Windows and NetOp for OS/2 Guests can remote control NetOp for DOS (network) Hosts 4.3x (via IPX and NetBIOS) without authentication. NetOp Access Server is compatible with NetOp Log Server and NetOp Gateway modules.
Packages	NetOp Access Server is available in a Windows version and an OS/2 version.



Guest side authentication is used when the Access Server is located on the Guest network. Hosts can be local or remote.



Host side authentication is used when the Access Server is located on the Host network. Guests can be local or dial-in via a Gateway.

Your dealer: