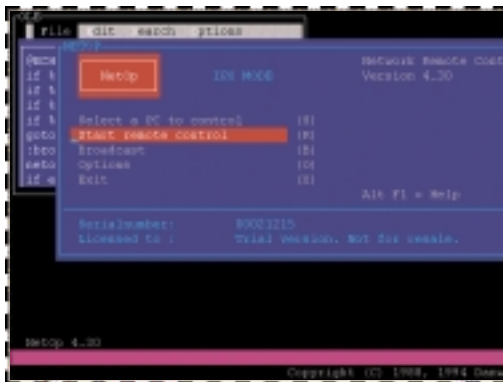




# NetOp for DOS



## Technology that helps

### NetOp for DOS – Fast, Easy and Reliable

NetOp for DOS delivers outstanding performance while using a minimum of system resources, making it the ideal remote control program for a DOS environment. Available in three different versions, the program lets you remotely access the screen, keyboard and mouse of any PC via either a network, ISDN or modem connection.

#### Network version

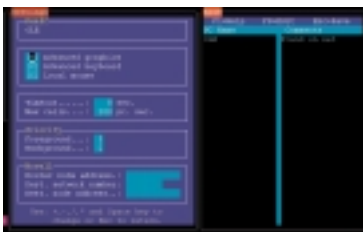
NetOp for DOS (network) allows you to remote control DOS, Windows 3.1x or OS/2 PCs on your network via IPX or NetBIOS. The DOS Hosts can also be remote controlled by NetOp for Windows and NetOp for OS/2 Guests. Help-desk personnel can view and remote control multiple PCs simultaneously with this system. The DOS TSR takes up as little as 6 kBytes of memory, and this version supports Windows in real, standard and enhanced mode. The program also supports OS/2, including PM, Workplace Shell, Full screen and DOS box. Apart from remote control functionality, NetOp for DOS (network) offers chat, file transfer and remote mouse control features.

#### ISDN version

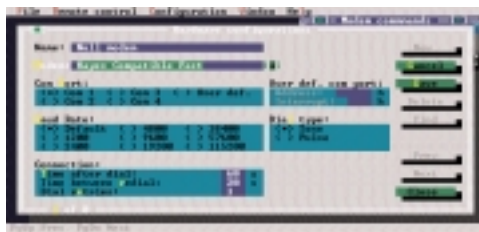
NetOp for DOS (ISDN) allows you to remote control DOS and Windows 3.1x PCs, including starting and exiting Windows. The communication link interfaces directly with ISDN adapters through the CAPI standard (Common API). The result is very fast remote control functionality for DOS-based PCs while granting hardware independence. This version provides support for DOS boxes, full screen or windowed. This program also supports text mode as well as applications running graphics. Additional features include chat, drag-and-drop file transfer and remote mouse control.

#### Modem version

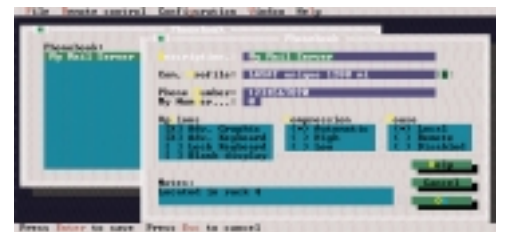
NetOp for DOS (modem) allows you to remote control DOS and OS/2 PCs (including the OS/2 PM desktop and full screen and windowed OS/2). The program offers exceptionally fast modem remote control for DOS-based PCs in text mode or with applications running graphics (EGA, VGA and SVGA). Unlike similar programs, NetOp requires very little memory on your Host PC, leaving plenty of memory for your applications. Additional features include chat, file transfer and remote mouse control.



NetOp for DOS (network) remote controls DOS, Windows 3.1x and OS/2.



NetOp for DOS (modem) remote controls DOS and OS/2.



NetOp for DOS (ISDN) remote controls DOS and Windows 3.1x.

Moving expertise—not people™



## Technical specifications

Program	NetOp for DOS (network)	NetOp for DOS (ISDN)	NetOp for DOS (modem)
Program type	DOS remote control	DOS remote control	DOS remote control
Requirements	Computer: IBM PC/PS or compatible • Video: CGA, EGA, VGA, MCGA and many SVGA 800x600x16 • Disk space: Host and Guest less than 1 MB • RAM: 300 kB free (Guest), 3-7 kB (DOS Host TSR) • Operating system: MS DOS 2.0 or higher, MS Windows 3.x and OS/2 1.3 or higher • IPX: Novell NetWare or compatible • NetBIOS: IBM or compatible • Mouse: Microsoft mouse or 100% compatible.	Computer: IBM PC/PS or compatible • Video: CGA, EGA, VGA, MCGA and many SVGA 800x600x16 • Disk space: Host and Guest less than 850 kB • RAM: 350 kB free (Guest), < 45 kB (DOS Host TSR) • Operating system: MS DOS 2.0 or higher, MS Windows 3.x (Host) • ISDN: CAPI 1.1 • Mouse: Microsoft mouse or 100% compatible.	Computer: IBM PC/PS or compatible • Video: CGA, EGA, VGA, MCGA and many SVGA 800x600x16 • Disk space: Host and Guest less than 850 kB • RAM: 300 kB free (Guest), < 25 kB (DOS Host TSR) • Operating system: MS DOS 2.0 or higher, OS/2 1.3 or higher • Serial interface: RS-232C • Modem: Null modem cable or modem supporting the AT command set • Mouse: Microsoft mouse or 100% compatible.
DOS support	Remote controls DOS in text mode (25, 43 or 50 lines) and applications in EGA, VGA and many SVGA. Mouse support.	Remote controls DOS in text mode (25, 43 or 50 lines) and applications in EGA, VGA and many SVGA. Mouse support.	Remote controls DOS in text mode (25, 43 or 50 lines) and applications in EGA, VGA and many SVGA. Mouse support.
Windows support	Remote controls Windows in VGA (up to 800x600x16 with many adapters), DOS command prompts. Mouse support.	Remote controls Windows in VGA (up to 800x600x16 with many adapters), DOS command prompts. Mouse support.	
OS/2 support	Remote controls Presentation Manager, Workplace Shell, Full screen/windowed OS/2 and DOS command prompts. Full screen/windowed WIN-OS2 in VGA. Mouse support.		Remote controls Presentation Manager, Workplace Shell, Full screen/windowed OS/2 and DOS command prompts. Full screen/windowed WIN-OS2 in VGA. Mouse support (not in WIN-OS2 full screen).
Communication	IPX or NetBIOS.	ISDN (CAPI).	Serial/modem.
File transfer	Bi-directional file transfer for DOS and OS/2. Transfers individual files, or entire directory structures.	Bi-directional file transfer for DOS with split screen view, drag and drop. Runs in background on Host.	Bi-directional file transfer for DOS and OS/2. Transfers individual files, or entire directory structures.
Chat	Chat feature allows Guest and Host to conduct an on-line real time discussion, using a two-pane dialog box.	Chat feature allows Guest and Host to conduct an on-line real time discussion, using a two-pane dialog box.	Chat feature allows Guest and Host to conduct an on-line real time discussion, using a two-pane dialog box.
Security	Password for access • Confirm access • Public/secret name • Limit Guest rights to: Keyboard/mouse, chat, DOS mouse.	Password for access • Confirm access • Limit Guest rights to: Keyboard/mouse, chat, DOS mouse, file transfer, display blanking.	Password for access • Limit Guest rights to: Keyboard/mouse, chat.
Guest features	Supports an unlimited number of Host tables • Automatically building tables of available Host PCs (IPX and NetBIOS networks) • Up to 10 simultaneous sessions • Flexible command line switches • Remote boot of Host • Zoom function • Screen broadcast in DOS and Windows.	Call Hosts defined in phonebook or use Quick Call • Flexible command line switches • Remote boot of Host • Zoom function • Hotkeys • On-line help system.	Call Hosts defined in phonebook or use Quick Dial • Flexible command line switches • Remote boot of Host • Zoom function • Hotkeys • On-line help system.
Host features	Flexible command line switches • Request chat function • Remote control alert.	Flexible command line switches • Request chat function.	Flexible command line switches • Request chat function.
Related NetOp products	NetOp for OS/2 and NetOp Remote Control Guests can remote control NetOp for DOS (network) Hosts 4.3x (via IPX and NetBIOS).		
Packages	NetOp for DOS (network) is available in combined Guest/Host packages or as stand alone modules for maximum flexibility.	NetOp for DOS (ISDN) is available in combined Guest/Host packages or as stand alone modules for maximum flexibility.	NetOp for DOS (modem) is available in combined Guest/Host packages or as stand alone modules for maximum flexibility.

Danware Data A/S  
Bregnerodvej 127  
DK-3460 Birkerød  
Denmark  
Tel: +45 4590 2525  
Fax: +45 4590 2526  
E-mail: info@netop.com  
Homepage: www.netop.com

Moving expertise—not people™

