

Your Active Net Filter

The world is constantly changing. The new Internet generation is now on their way to companies. This generation uses the Internet intensely. This means that companies now have to continuously consider how many hours an average employee may use the Internet, and for which purposes.

NetOp Netfilter Business gives the corporate management an important tool for this continuous consideration and at the same time guides and counsels the employees about the content of the Internet pages they use. Both the Internet usage and bandwidth consumption is optimized in this manner - and the company saves money and experiences increased productivity.

Installation

- Place the NetOp Netfilter CD in your CDROM drive, or use the appropriate setup files downloaded from the Internet.
- The installation will start automatically if Windows is configured for auto startup from CD-ROM drive. If the installation does not start automatically, click 'This Computer' on the Windows desktop and double click the NetOp Netfilter icon.
- Select language. This language will be used during the installation and by the installed software.
- Select either to install the entire NetOp Netfilter Business package, including NetOp Netfilter Admin, or just NetOp Netfilter Admin.

Note: NetOp Netfilter Admin is an administration program for NetOp Netfilter Business. Install NetOp Netfilter Business on a server and NetOp Netfilter Admin on any computer that you wish to use for remote administration of the server.

- After the installation is completed, NetOp Netfilter is installed as a service and will be started automatically the next time the machine is rebooted.
- You must restart the machine before proceeding to the next section.

Loading NetOp Net Filter

- NetOp Netfilter uses the TCP port, 3128, for communication. If port 3128 is already used by another service on the machine, change it with the NetOp Netfilter Admin program. See further description in the manual.
- Before the clients in the network are configured to utilize NetOp Netfilter, examine if NetOp Netfilter is configured correctly and is able to

access the Internet. If the port for browser communication has not been changed and Internet Explorer is installed on the machine, it can easily be verified with the NetOp Netfilter Test application.

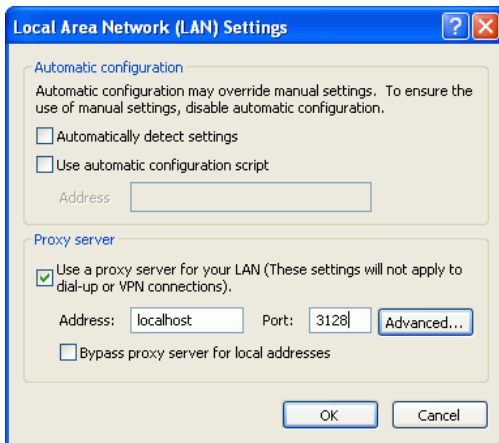
Follow these steps:

Start > Programs > NetOp Netfilter > Business > Test > Click 'Start Internet Explorer'.



If Netfilter is configured correctly, the browser will show a page with the message stating that Netfilter is installed correctly. Try visiting a page on the Internet to verify that you can connect to the Internet.

- Alternatively, you can open a browser and set the proxy server to the IP-address/machine name of the machine where Netfilter is installed and the port number to 3128 (unless another port has been chosen in NetOp Netfilter Admin). If the browser is open at the same machine as NetOp Netfilter, you may enter 'localhost' as machine name. In Internet Explorer, follow these steps: Tools > Internet Options > Connections > LAN Settings > Mark the checkbox Use a proxy server. Enter IP-address/machine name of NetOp Netfilter in the Address field. Enter 3128 in the Port field.
- To verify that NetOp Netfilter is installed and configured correctly, the address 'http://are-you-alive' can be entered in the Address field in the browser. A correctly configured NetOp Netfilter will show a message stating that NetOp Netfilter is correctly installed. You can also visit a page on the Internet to make sure the server is correctly connected to the Internet



Note: If a page is not shown correctly, it is important to examine if the page is working without using NetOp Netfilter in a browser which is not configured to use Danware Netfilter. This should be done to make sure that the Internet page is not temporarily offline.

Server Configuration

The settings for NetOp Netfilter, i.e. port number and integration with an existing proxy server, can be configured with the program NetOp Netfilter Admin, which is described in section 3 in the Manual.

Client Machine Configuration

Before the clients in the network can be analyzed by Netfilter, the browsers must be configured to utilize NetOp Netfilter as a proxy for HTTP traffic. This is described further in section 2.3 in the Manual. If you are upgrading from NetOp TrafficAnalyzer, the clients may already be configured.

Further information

More information about installation and use of NetOp Netfilter can be found in the Manual.

Follow these steps:

Start > Programs > Danware > Business > Manual (PDF) after the software has been installed on the server.

Further information about Danware's product lines can be found here: www.netop.com.

How does it work

Image Analysis

Netfilter is one of the only filters that utilize image analysis. Most porn sites consist mainly of images therefore Netfilter uses its high precision and lightning fast image analysis to analyze and block pornographic images. By examining many features in an image such as shape, skin and faces Netfilter correctly blocks pornographic images while innocent images are allowed.

Text Analysis

Netfilter also analyses the text on-the-fly in order to provide an even more precise solution. Many languages are supported including English, Spanish, German, French and Nordic. Both individual words, sentences and page setup are analyzed for maximum precision. [PICS™ labels](#) are also evaluated.

Artificial Intelligence

Because of the complexity in analyzing images, Netfilter has developed and trained an artificial neural network to mimic the human brain's ability to correctly distinguish pornographic from innocent images.

Dynamic Content Filtering

Netfilter analyses web pages on-the-fly without consulting a black list of disallowed pages. By using a dynamic engine, Netfilter can block existing web pages as well as those of tomorrow. Therefore Netfilter does not require constant updates to cope with the many new harmful sites that are introduced to the Internet each day.