

NetOp School Class Server – Product sheet

Teachers and Students using NetOp School on larger educational networks will most likely participate in many classes during the day and over the year(s). They may use portable computers and may move around, connecting to different parts of the network (subnets, wireless access points, etc.).

To facilitate the connection between Teacher and Students in a certain class at a given time, a central database with all courses, lessons and participants can be used to automate connections. The NetOp School Class Server product is meant to serve this purpose.

The product consists of two modules: The Class Server and the Class Manager.

The Class Server takes care of the communication between the Teacher and Student modules and the database that holds information on which teacher should have a class with which students at a given time. The course and time planning details are entered into the database via the Class Manager.

If Teacher and Students in the interface select “Use Class Server” as connection method, they will automatically be connected to the scheduled and currently running class or optionally be presented with a list of classes that they have been scheduled for. Selecting one will connect them to the class, even if they are on different subnets.

Modules: Class Server and Class Manager

Class Server

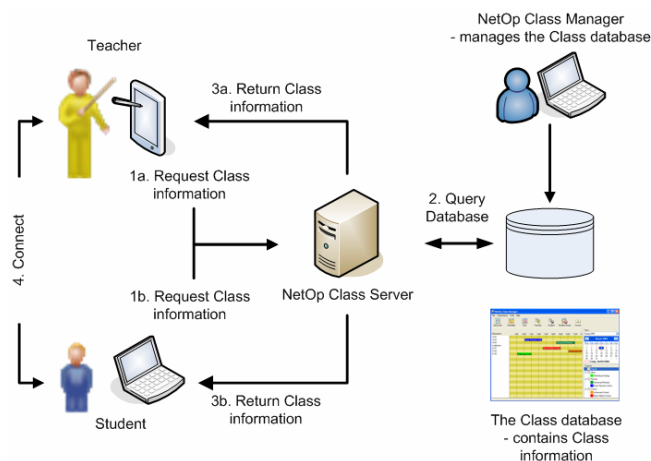
Characteristics:

- Communication link between Teacher and Student modules and a database
- Query language: SQL
- Connectivity: OLE DB, ODBC
- More simultaneous Class Servers possible
- As a specialized NetOp Host module it can be remotely controlled by a NetOp Guest

Class Manager

Features:

- Database Management and Configuration
 - Manage Courses
 - Manage Lessons and Terms
 - Manage Teachers
 - Manage Students
 - Manage Classrooms
- Import records from file (comma separated)
- Course and Time planner
 - Manage Courses – assign Teachers and Students to Courses
 - Lessons and Terms – plan per day or make Lessons recurring for the whole term.

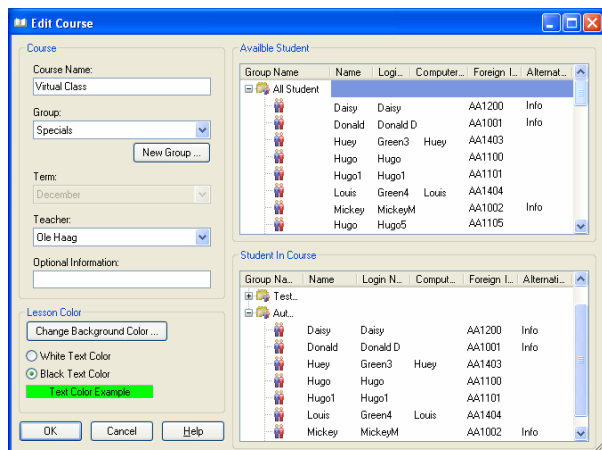


The Planner is the basis for automated connections between Teacher and Student modules, upon query through the Class Server to the database.

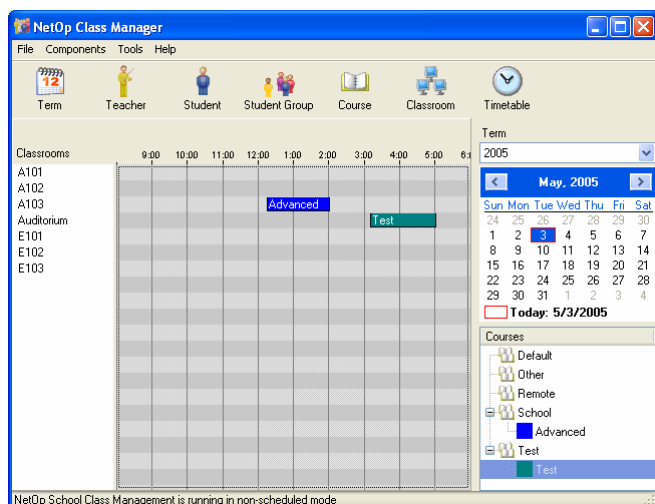
Choose between two methods:

- **Non-scheduled** - Teachers and Students connect based on information about Courses
- **Scheduled** - Teachers and Students connect based on information about planned lessons (Course-Date-Time)

Screen shots

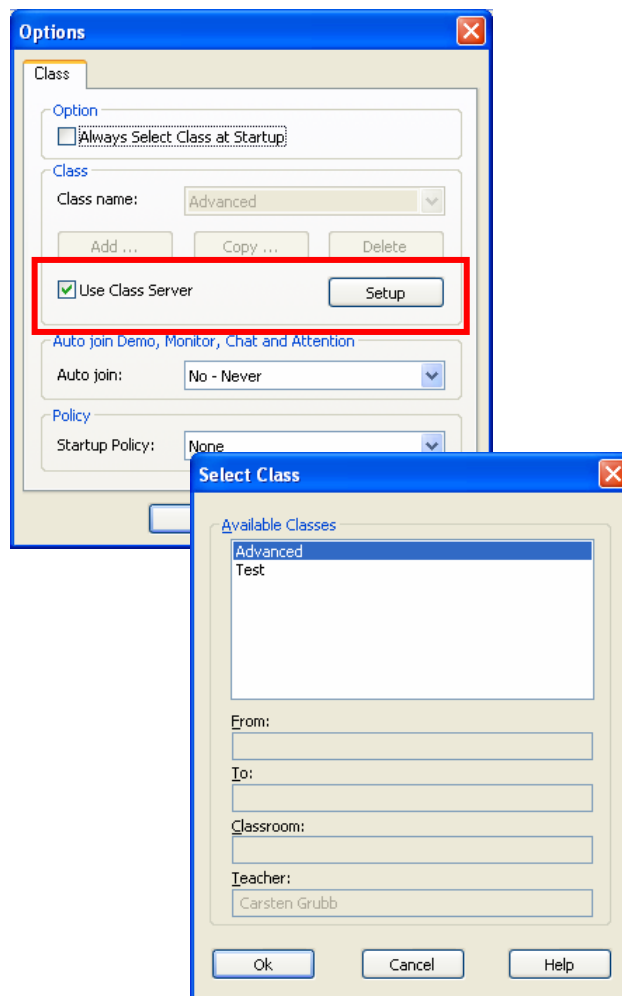


Edit Courses to assign Teachers and Students to Courses using drag and drop. Change color label for easy identification in the Time Plan.



Class Manager, main window – drag and drop a Course on a Classroom to create a Lesson either for the day, or as Daily or Weekly recurring for the whole Term.

Teachers and Students selecting **Use Class Server** as connection method are automatically connected according to planned Courses or Lessons in the Time Plan.



Technical requirements

Class Manager

Computer – Pentium or higher or 100% compatible.

Memory - 64 MB for the application

Platform – Windows 2003, Windows XP Professional, Windows 2000 Professional

Microsoft .NET framework 1.1

MDAC 2.7 – Microsoft Data Access Components

Disk Space – Less than 10MB

Communication – TCP/IP network

Class Server

Computer – Pentium or higher or 100% compatible.

Memory - 32 MB for the application

Platform - Windows 2003, Windows XP Professional, Windows 2000 Professional

Disk Space – Less than 16MB

Communication – TCP/IP network

Teacher and Student

NetOp School, version 4.00